



VoIP Intercoms for IP Networks

IPefono

IPefono is a device designed to provide **voice communications through IP network** infrastructures. It has several operating modes depending on the customer needs, such as *“conversation”*, *“push to talk”*, *“listening”*, *“paging”* and *“broadcast”*.

Interesting features include its excellent energy efficient and one of the shortest audio delay, among the VoIP devices on the market today.

It can be integrated into standard IP telephony platforms including Call Managers or VoIP PBXs using the Session Initiation Protocol or even to manage it using a standard VoIP phone. It offers advanced features like forwarding calls to a cell phone, the use of Internet accounts, recording communications, multi conferencing, ...

There is a Windows Helpdesk application available for free, as well as various ActiveX components to integrate the IPefono in third party applications.

The IPefono can be managed and configured using a Web Browser. Also, it provides diagnostic traces through Telnet server.

It can be used in many different environments, such as access controls, emergency systems, public address systems, etc.

ConectalP Tecnología S.L.
Novell 58
08014 Barcelona, SPAIN

WEB: www.conectalP.es
EMAIL: info@conectaip.es
TEL: +34 93 490 16 01

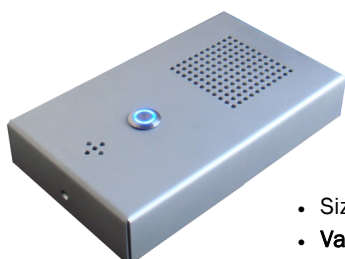
ConectalP
www.conectalP.es



Technical Features

- Energy efficiency.
- Class D audio amplifiers with 3.2 Watts and 96% efficiency.
- Remote adjustment of audio levels.
- Short audio delay.
- Session Initiation Protocol (SIP) for Call Control.
- Real Time Protocol for audio transport.
- Custom WAV files stored in its internal storage unit which are played.
- Automatic verification of the audio circuit.
- Audio CODECs: G711, G721 and G726.
- Minimum bandwidth of 16 Kbps.
- Web server to configure and update firmware as well as upload WAV files.
- Telnet server for administration, diagnosis and configuration.
- DNS client.
- NTP clock synchronization.
- Optional IP Video Camera.
- It can be configured via LAN without requiring a previous IP configuration (DeviceFinder support).
- Connection to the telephone network via an ATA adapter.
- Direct connection to VoIP accounts for long distance communication and access to other telephone networks (GSM, PSTN, ...).

IPefono Wall Mount



Outdoor intercom

- Size: 175 x 103 x 32 mm.
- **Vandal resistant** aluminum format.
- Illuminated call button.
- 16 keys keyboard (optional).
- Integrated **video camera** (optional).
- 100 BT Ethernet.
- Power over Ethernet (optional).
- Two supervised inputs or two outputs.
- Power supply from 5V to 24V.
- **IP-65** protection index.
- Flush or surface mount.

IPefono LC



Compact intercom

- **Small size:** 82x 53 x 23 mm.
- One microphone input.
- One 4Ω or 8Ω speaker output.
- 100 BT Ethernet.
- **Power over Ethernet** 802.3af.
- One call button input.
- One relay output for remote control.
- Call progress indicator.
- Power supply 5V.

IPefono High Quality



Rail DIN Switch intercom

- Size: 70 x 90 x 57 mm.
- **Rail DIN** module 4 size.
- One microphone input.
- One audio line input.
- One 4Ω or 8Ω speaker output.
- **Video camera** (optional).
- 100 BT Ethernet.
- **Switch** with two Ethernet ports.
- One call button input.
- Two supervised inputs or two outputs.
- **RFID card reader**.
- Call progress indicator.
- Power supply 5V to 24V.

IPefono Handset



Wall mount intercom with handset

- Size: 210 x 95 x 25 mm.
- 100 BT Ethernet.
- One call push button.
- One supervised digital input .
- One relay output for remote control.
- Call progress indicator.
- Power supply from 5V to 24V.



IPefono REC



Audio recording

- Highly sensitive microphone.
- Microphone amplifier with low noise AGC.
- Flash memory storage (0,75GB per day and channel required).
- 100 BT Ethernet.
- Power over Ethernet (PoE 802.3af).
- Two inputs for recording control.
- An alarm output sound detection.
- Digital signature.
- Power supply from 5 to 24.
- It plays audio in both live and playback mode, through the IP network.
- The recorded audio can be downloaded in a compatible file format.
- It can be integrated into standard VoIP networks.
- Histogram of the power of the recorded audio signal.
- Internal clock which can be synchronized by the IP network.
- Flush or surface mounting.

IPefono Speaker



IP paging system

- Size: 80 mm.
- Point to point conversation.
- Locutions by zones.
- Pre-recorded message player when an input is activated.
- 100 BT Ethernet.
- Power over Ethernet (PoE 802.3af).
- One monitored input.
- Power supply from 5V to 24V.
- Flush or surface mounting.

